




# Transforming Rural Healthcare with Technology: Scalable, Sustainable, & Fast Solutions






Rural healthcare faces numerous challenges, from limited access to quality care to insufficient healthcare infrastructure. In the U.S. alone, more than **60 million Americans live in rural areas\***, where healthcare facilities are often stretched thin, and residents must travel long distances for essential services.



Rural hospitals are closing at alarming rates, with over 130 closures since 2010\*\*.



This crisis highlights the need for transformative solutions, especially ones that leverage technology to address systemic issues.

References:

\*<https://www.gao.gov/blog/why-health-care-harder-access-rural-america>

\*\*<https://www.ruralhealthinfo.org/rural-monitor/brock-slabach>





One of the core problems in rural healthcare is the existence of **data silos and fragmented systems**.

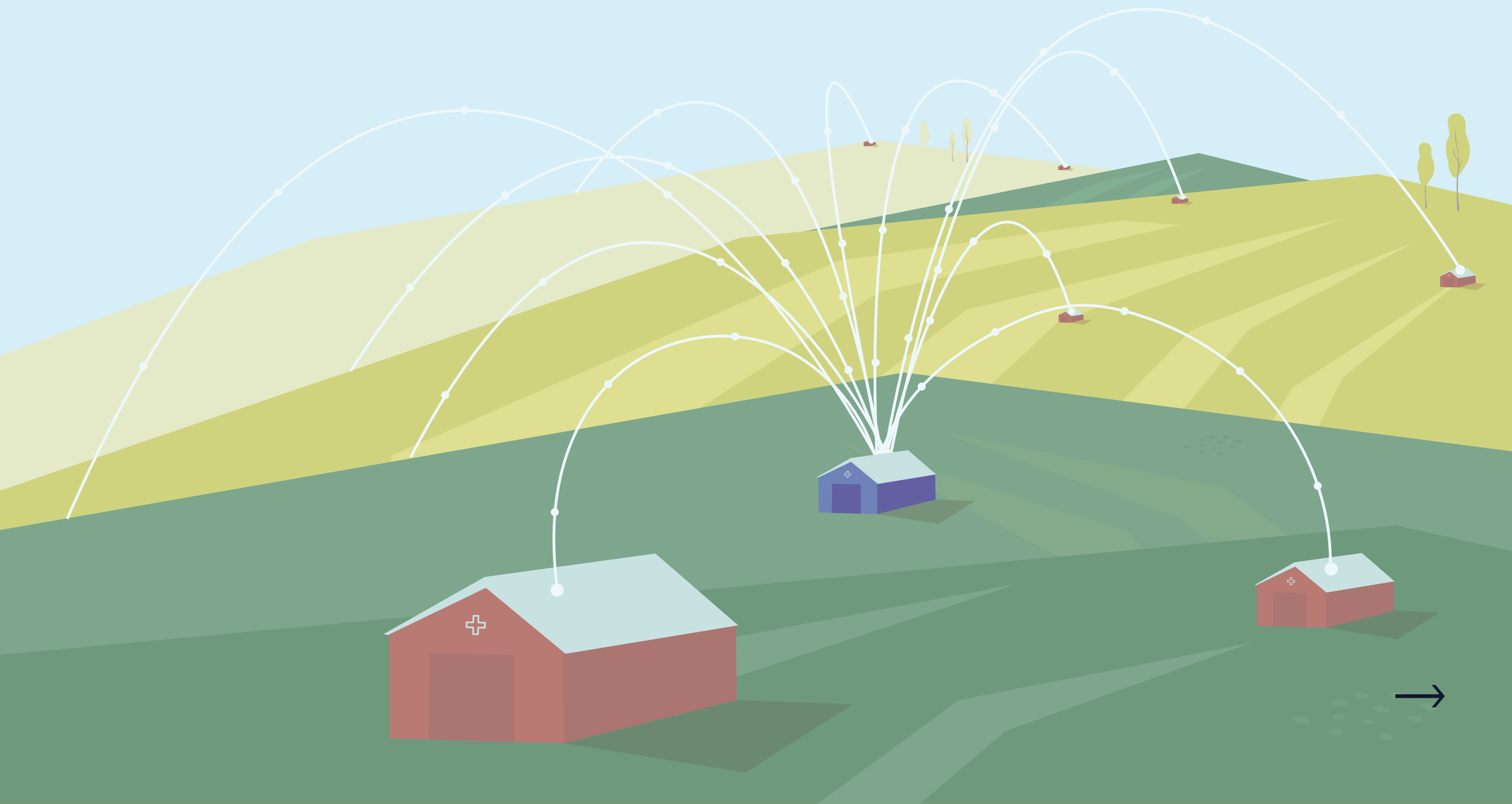
Healthcare providers in rural areas often lack access to unified data, which leads to **inefficient care coordination, poor population health management**, and challenges in identifying community health needs. Fragmented systems mean that important patient data is stored in disconnected places, making it harder for healthcare providers to get a complete view of their patients' needs.





Technology offers promising opportunities to solve these challenges. **Integrated data platforms** can break down these silos, providing healthcare providers with a clear, real-time view of population health needs.

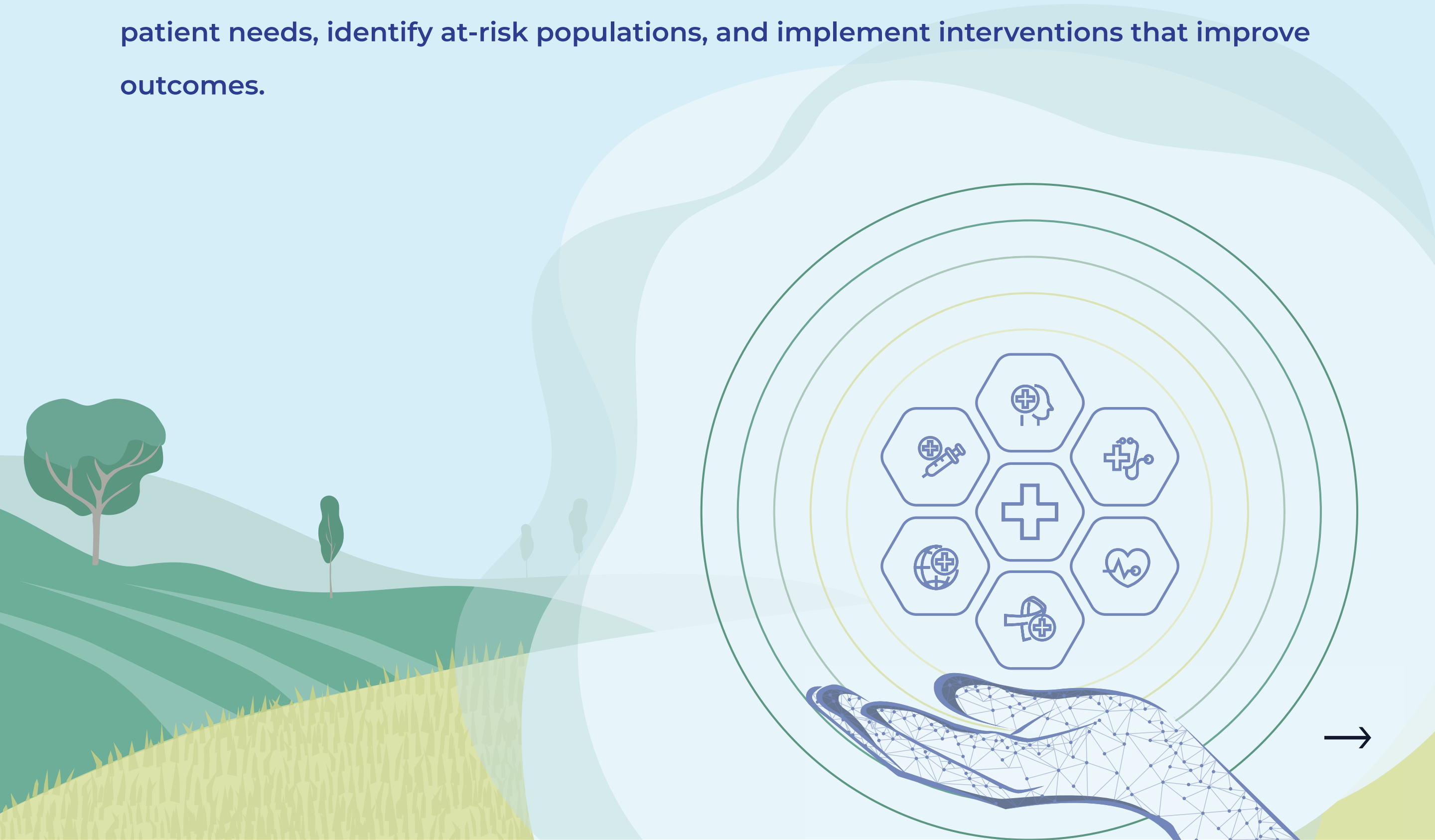
By **unifying data** from multiple sources—such as hospitals, clinics, community programs, and government records—providers can **gain insights** that help them **make informed decisions**, allocate resources effectively, and deliver personalized care.





Scalable technology solutions can help bridge the gaps. For example, telemedicine and mobile health apps have already been proven to reduce barriers to care in rural areas. But to ensure these solutions are **sustainable, cost-effective, and adoptable**, data integration is essential.

When providers have access to comprehensive, integrated data, they can predict patient needs, identify at-risk populations, and implement interventions that improve outcomes.





At WellStack, we specialize in enabling healthcare organizations to realize this potential with our Data Management and Analytics Platform.

Our platform unifies data from various sources, offering deep insights into the health of rural populations and the communities they serve.

With WellStack, rural healthcare providers can move from reactive care to proactive, data-driven strategies that improve the quality and efficiency of care.

**As healthcare continues to evolve, it is clear that scalable and fast-to-implement solutions are essential to address the challenges of rural healthcare. By integrating data and leveraging technology, we can ensure that rural communities receive the quality care they deserve.**

[Learn more at WellStack.ai](https://www.wellstack.ai)