

# Accelerating Healthcare Data Strategies with the WellStack Platform

## A Modern Data Ecosystem for Informed Decision-Making

Healthcare organizations face many hurdles in getting to a quality data foundation – complex data integration, siloed source systems, and a shortage of skilled workers. WellStack bridges these gaps offering pre-built but flexible data integration pipelines, user friendly models, and the measures you need to drive effective decisions.

**WellStack™** is the fastest path to a clean, actionable healthcare data foundation. It accelerates healthcare data analytics, empowering users, streamlining processes, and introducing decision hubs for effective outcomes. Decision hubs help identify crucial indicators, navigate decision matrices, and foster effective organizational outcomes.

## WellStack™ Decision Hub

Connected Decision Hubs aligned to healthcare’s core data sets that provide actionable insights to the industry’s most valuable problems.

- Integrates diverse data for informed decisions
- Applies advanced analytics for predicting outcomes and optimizing financial performance
- Unifies data, providing holistic insights into patient health and operations

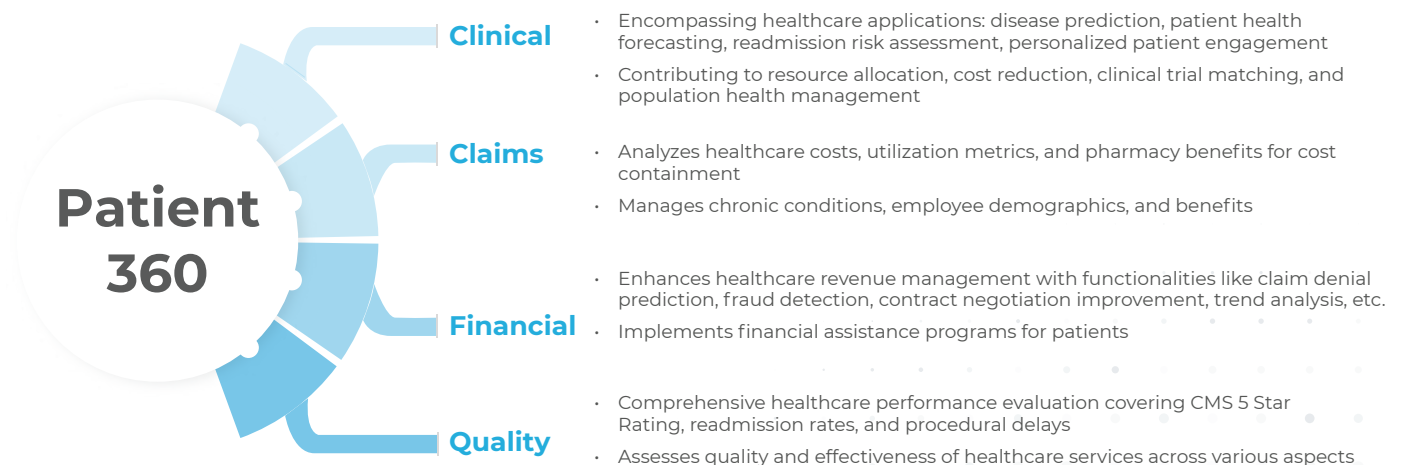
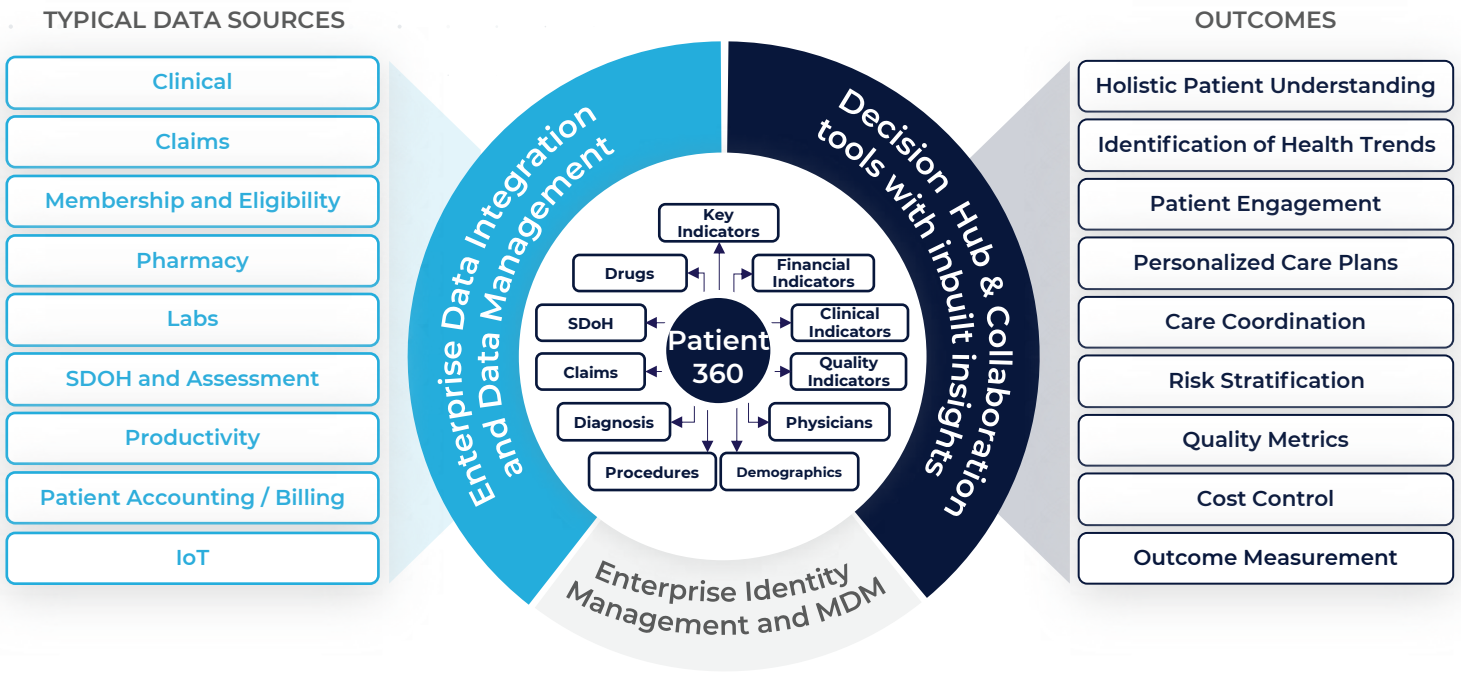


Fig: A longitudinal record for patients and providers is vital for driving successful outcomes

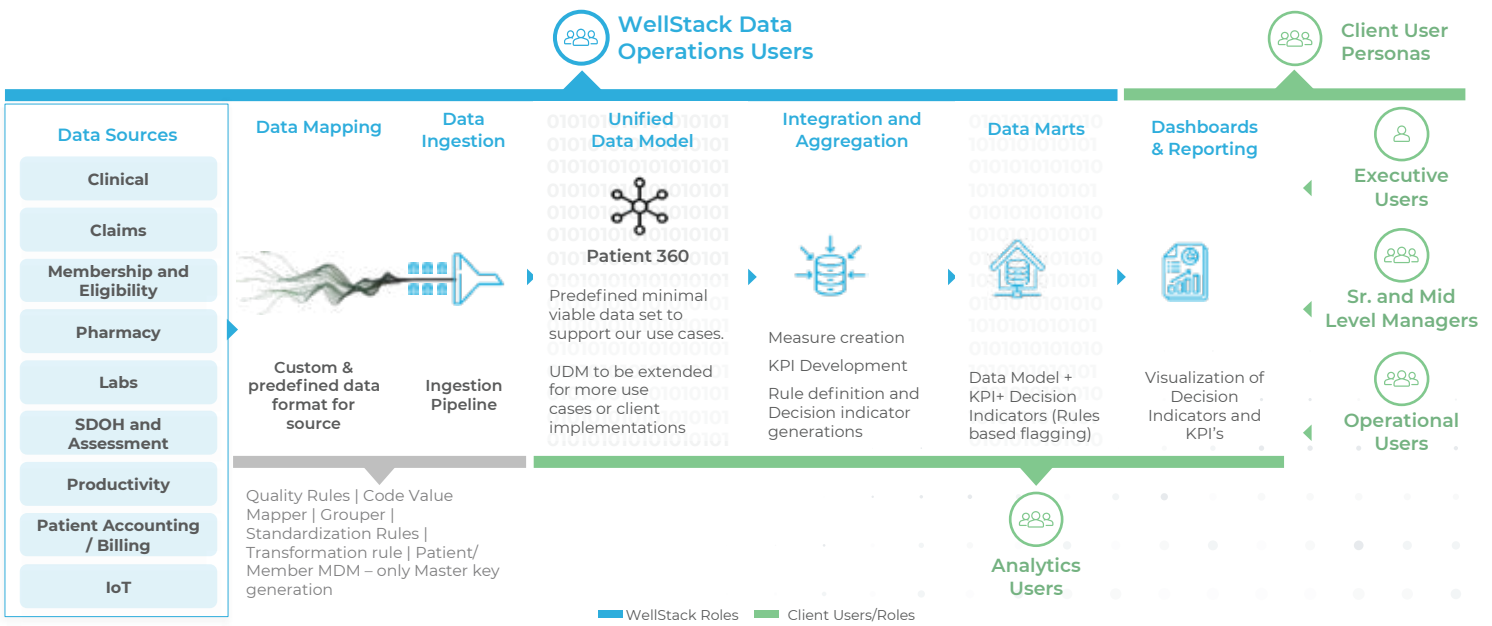
## Patient 360 is the Foundation for the Decision Hub

# Patient 360: Unlocking the Power of Comprehensive Healthcare Information

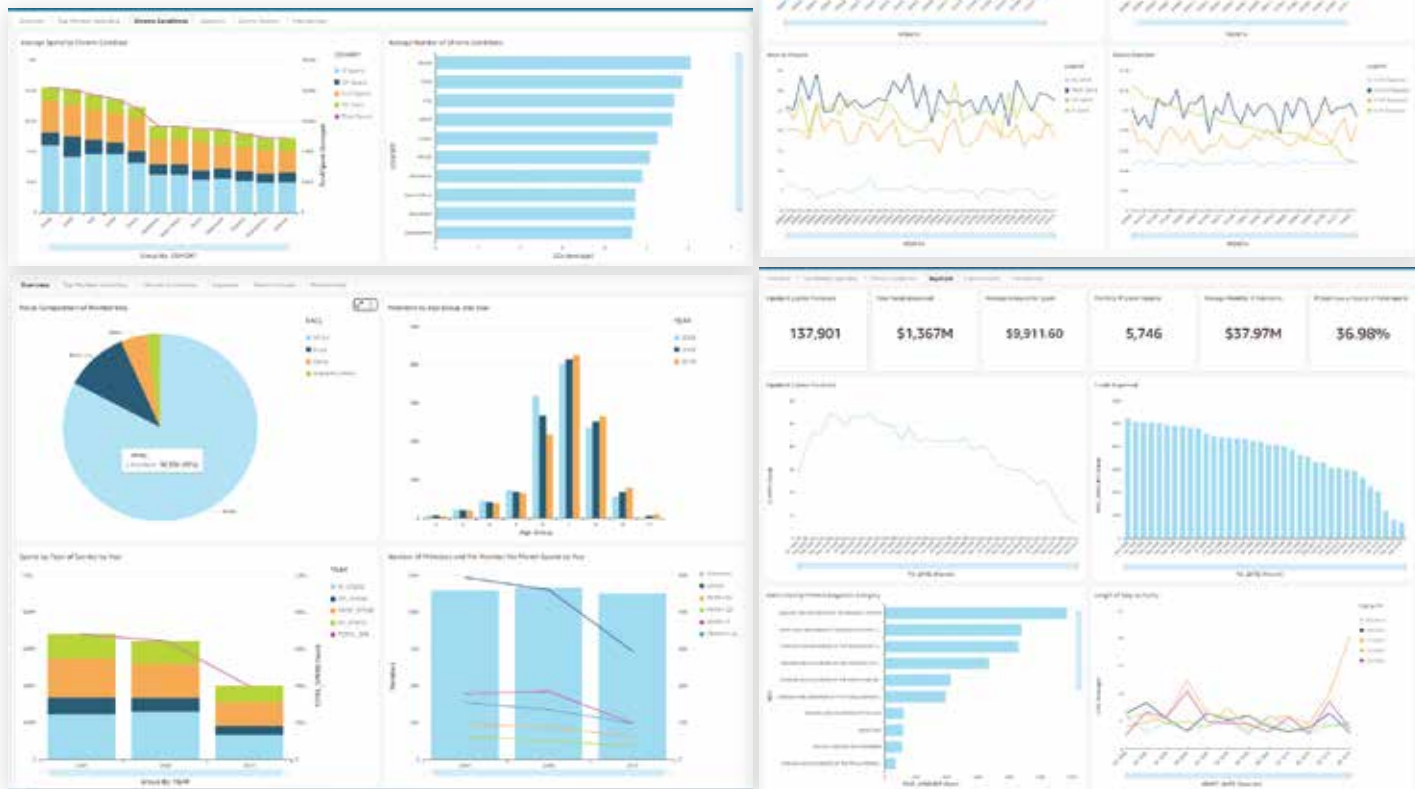
At WellStack, Patient 360 represents a holistic approach to capturing a comprehensive view by integrating medical history, social determinants, and healthcare utilization. This process creates a detailed profile of an individual patient's health.



## Decision Hub Data Flow



# Dashboards



## We are uniquely qualified

### Select Client Experience

**Healthcare Quality Data Collaborator:** Clinical, operational and financial data from **40+ health systems** covering **~5M unique** lives managing data integration, analytics, operations and data distributions for and 15 years' worth of clinical data

- Improved state-wide healthcare quality by 2X
- Boosted patient satisfaction by 50%
- Elevated clinical outcomes, emphasizing diabetic and chronic conditions management

**One of the Largest APCD Data Providers:** Member data from **22 health plans** covering **5.5M unique lives** to produce trusted analytics and actionable data distribution

- **Enhanced value of claims data universally**
- **Optimized cost metrics**
- **Augmented patient access to healthcare**
- **Implemented Use cases such:**
  - Opioid Prescribing Patterns
  - Key Performance Indicators by Provider
  - Key Performance Indicators by Health Plan
  - Potentially Avoidable Care by Provider
  - Pharmacy Utilization by Provider
  - Pharmacy Utilization by Health Plan

- Outmigration Patterns
- Potentially Avoidable Care by Health Plan
- Market Share

The **future** of analytics is **here.**

Serving 20,000 providers +12 million patients nationwide



### Our Promise to You:

We deliver solutions your team will love, risk-free

We help accelerate your analytics journey with WellStack™

# Typical Indicators from Decision Hub

## Healthcare Cost Analysis:

- Total Healthcare Spending per Member
- Healthcare Cost Trend Analysis
- Healthcare Cost Distribution (e.g., Inpatient, Outpatient, Prescription drugs)

## Wellness Program Effectiveness:

- Member Participation, Retention Rates
- Employee Satisfaction Surveys
- Program Completion Rates
- Completion Rates of Health Risk Assessments (HRA)
- Healthcare Cost Reduction
- Disease Prevention Rate

## Utilization Metrics:

- Hospitalization Rate per Member
- Emergency Department (ED) Visit Rate per Member
- Ambulatory Care Visits per Member
- Specialist Consultation Rate
- Preventive Care Utilization Rates
- Imaging and Diagnostic Test Utilization

## Pharmacy Benefit Analysis:

- Prescription Drug Utilization and Costs
- Generic vs. Brand Medication Usage
- High-Cost Drug Utilization

## Chronic Condition Management:

- Prevalence of Chronic Conditions among Members
- Medication Adherence Rates for Chronic Conditions
- Disease Management Program Participation

## Employee Demographics and Segmentation:

- Age, Gender, and Family Status Analysis
- Member Segment-Specific Health Metrics

## Healthcare Cost Containment:

- Analysis of High-Cost Claims
- Cost-Effectiveness of Benefit Design Changes
- Analysis of Cost Drivers

## Benefit Plan Assessment:

- Plan Enrollment and Choice Analysis
- Benefit Utilization Patterns

## Join the Movement

Become a part of the WellStack movement towards better, more patient-centered healthcare. Schedule a demo to explore how WellStack transforms healthcare data, or reach out to us for more information and details on collaboration opportunities



Scan to schedule a meeting with a WellStack™ data expert today.